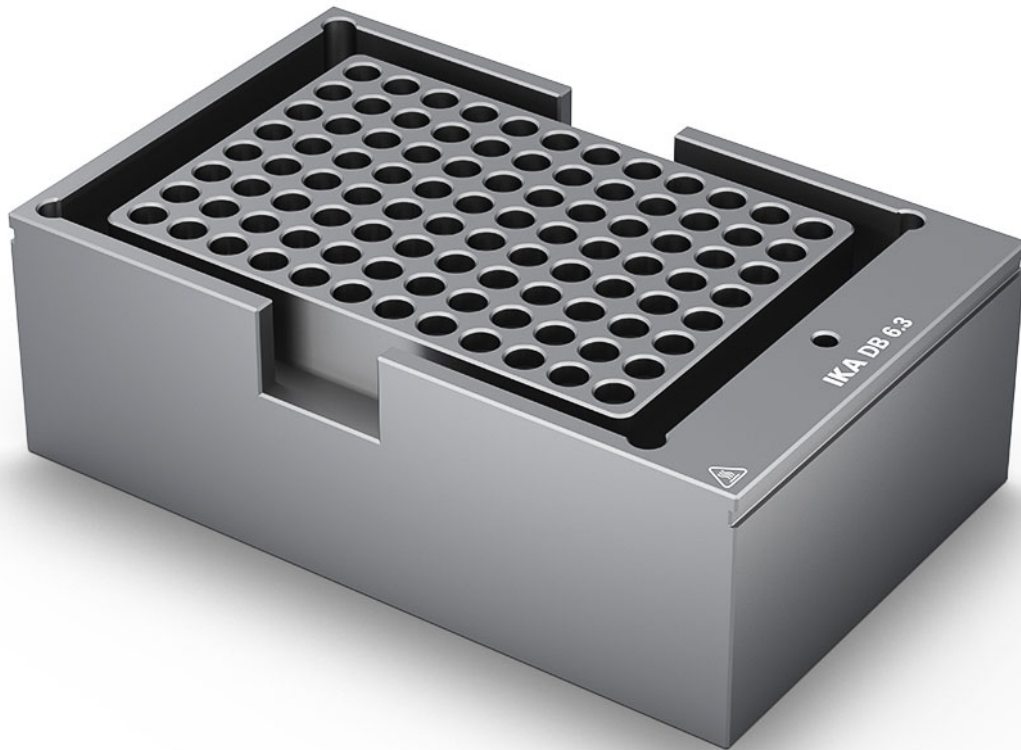




designed for scientists



DB 6.3

/// Data Sheet

Used for 96 – well PCR plate (0.2 ml tubes)

Pore size: Ø 6.4 mm

No. of holes: 96

Hole depth: 15.5 mm

Dimensions (W x D x H): 95 x 152 x 51 mm



designed for scientists

Technical Data

Dimensions (W x H x D) [mm]	95 x 51 x 152
Weight [kg]	1.706
Permissible ambient temperature [°C]	5 - 40

